

When It Rains, It Pours: Organizational Learning in the Face of More Extreme Precipitation

National Adaptation Forum | April 24, 2019

John Phillips

Director of Integrated Watershed Management, Parametrix

Jessica Engel

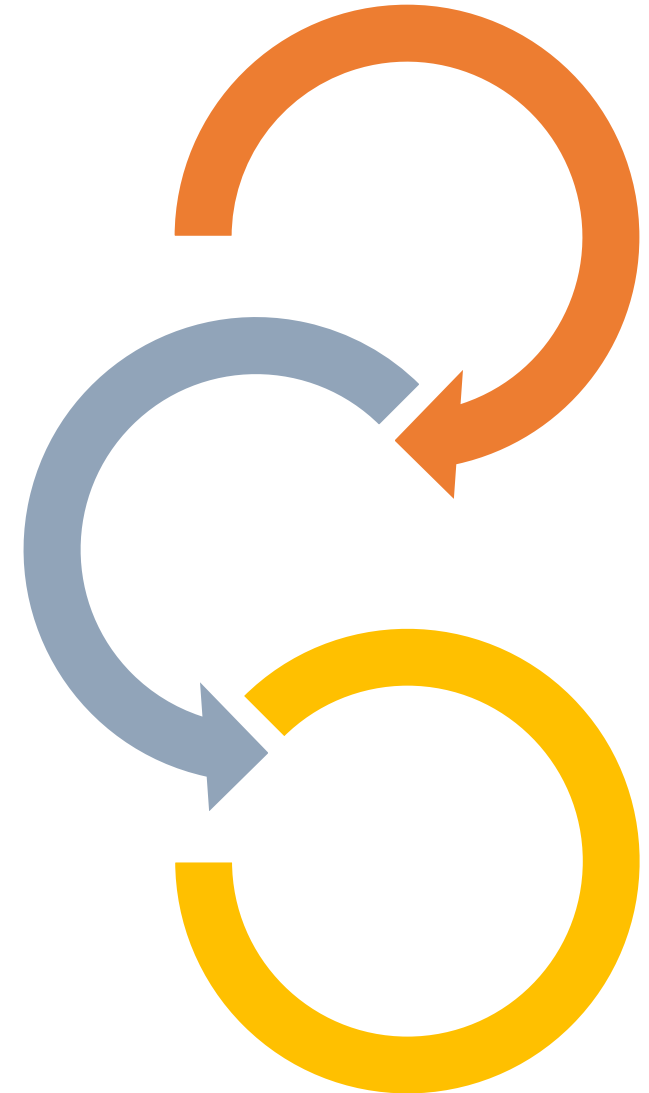
Water Quality Planner, King County Stormwater Services

Jim Simmonds

Comprehensive Planning Supervisor, King County Wastewater Treatment Division

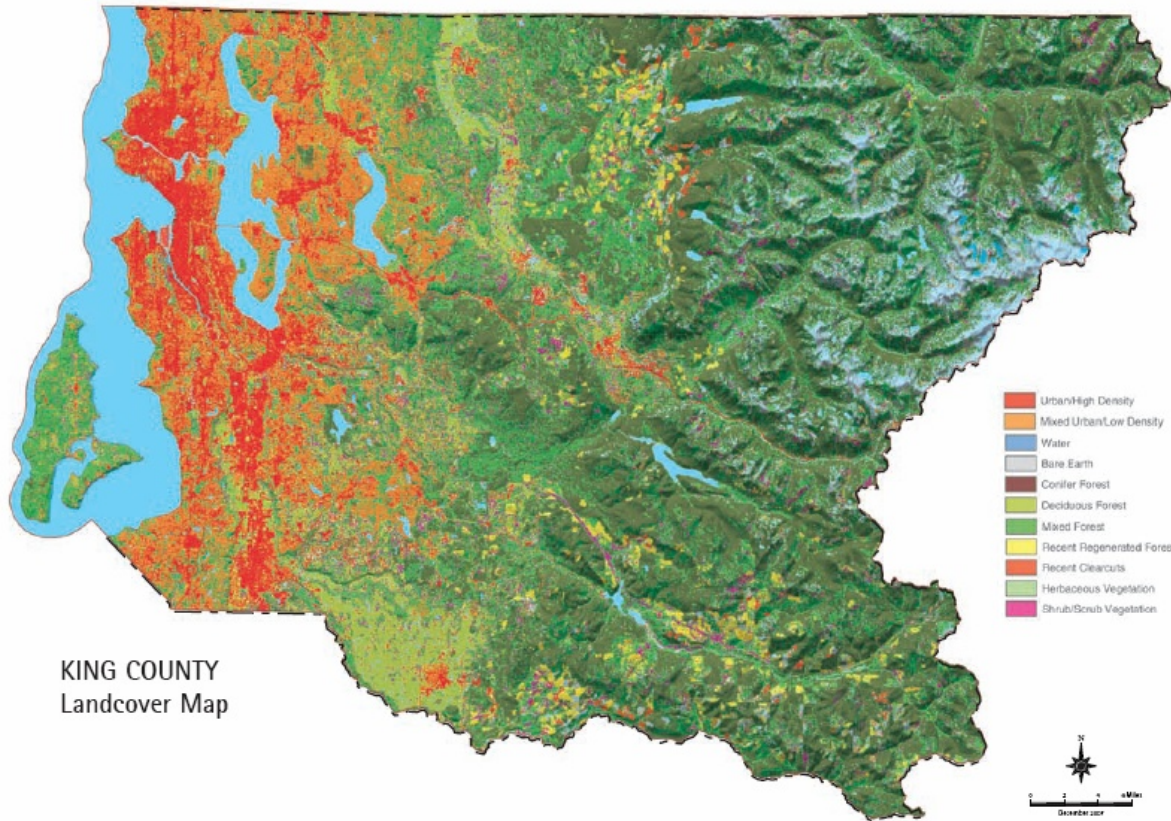
Lara Whitely Binder

Climate Preparedness Specialist, King County



King County

About King County



KING COUNTY
Landcover Map

King County

- 2.2 million residents (13th most populous)
- 170+ different languages
- 2,134 square miles
- 39 cities including Seattle and Bellevue
- Mountains to Sound

King County Government

- Provides local and regional services such as:
 - regional transit
 - wastewater treatment
 - solid waste disposal
 - flood control
 - regional parks and trails
 - public health
- 2017-2018 budget is \$11.4 billion; 14,000+ employees

How many days of rain does the Seattle metro area get on average?

78 days

126 days

156 days

194 days

326 days

How much rain does the Seattle metro get on an annual basis?

37 inches

42 inches

59 inches

63 inches

72 inches

November 2006 was Seattle's wettest month on record. How much rain fell that month??

6.51 inches

8.26 inches

15.63 inches

22.2 inches

26.34 inches