



GSD CONSULTING

Aligning Economic Development with Resilience

APRIL 24, 2019

NATIONAL ADAPTATION FORUM

California's Capital Region



Map of the Sacramento Valley Region in Northern California. Source: Thorne 2018.

- ▶ Six counties surrounding Sacramento
- ▶ Home to 2.5M, in 22 city and county jurisdictions
- ▶ Valley, foothills, and Sierra Nevada with both very blue and very red communities
- ▶ Majority-minority:
 - ▶ 38% Caucasian, 28.3% Hispanic/Latino, 13.4% African American, 18.7% Asian, 1.6% two or more races
- ▶ Sacramento County most language-diverse in state
 - ▶ 17 languages spoken by >2% population
- ▶ Growing inequities:
 - ▶ 34% of all families struggle economically, and
 - ▶ 66% of those without high school degrees, 47% Black and 42% Latino

Regional Climate Risks



Heat

- By 2050, 26 days >103.9 (currently 4)
- By 2100, summer average of 99F, equivalent of Tucson (currently 91F)
- Expected 4% annual decline in economic output for each 1C increase in temperatures

Flood

- Highest risk level in nation outside Louisiana
- Atmospheric rivers: more frequent and severe

Drought

- 2015 drought costs: \$1.84B, >10,000 jobs

Wildfire

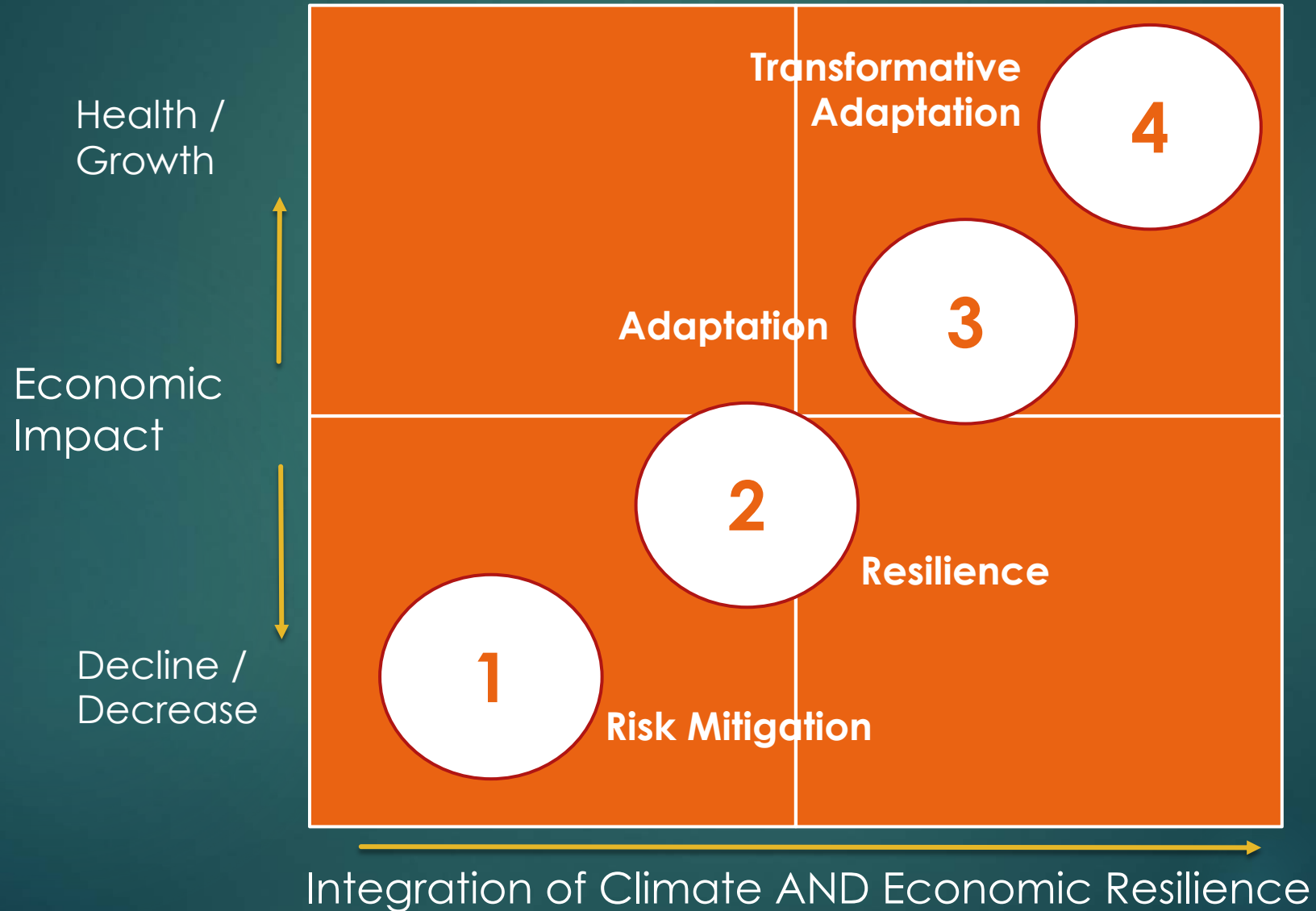
- Sierra and foothills communities at risk
- Wildfire-smoke air quality crises (Camp Fire, 2 weeks duration)

Shifting public opinion on climate action and jobs impact?



- ▶ *Do you think that California doing things to reduce climate change in the future will result in ...*
 - ▶ More jobs
 - ▶ Fewer jobs
 - ▶ No effect on jobs
- ▶ Will the results indicate a growing interest in explicitly connecting economic development efforts to climate actions?

Integrating Climate Resilience and Economic Development



Integrating Climate Resilience and Economic Development



1

Risk Mitigation:

Limit disasters' devastation

- Local Hazard Mitigation Planning
- Disaster preparedness
- Business resiliency planning

2

Resilience:

Anticipate changes to limit economic risks

- Levee strengthening
- Forest management
- Water-use efficiency measures
- Cooling centers

3

Adaptation:

Embed climate futures in economic development strategies

- Integrate regional econ dev strategy into land use and transportation planning (SACOG)
- "Green Means Go"

4

Transformative Adaptation:

Create truly climate-adaptive economies

- Shape economic and business strategies to accommodate *and* seize opportunities in future climate needs /realities

Where We Must Head



- ▶ The "silos" between *community development* and *economic development* are (rightly) being dismantled
 - ▶ Inclusive economic strategies in the Capital Region and around the country
- ▶ The next "silos" to fall will be those that distinguish between *economic development* and *climate resilience*
 - ▶ Economic strategies fully interwoven with climate change awareness, mitigation, and adaptation

Meg Arnold
Principal, GSD Consulting

(530) 867-1921

meg@gsdconsulting.net

